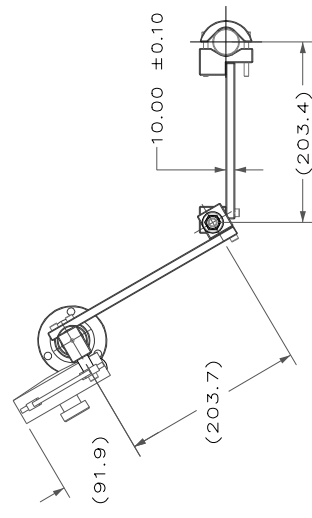


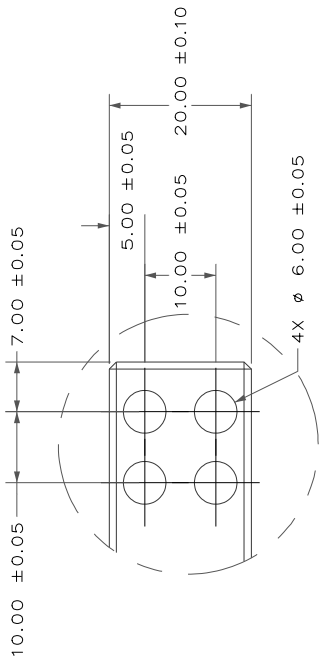
| | | | | | | | |
|----------|---|----------------------------------|---|----------|---|----------|---|
| 8 | 7 | 6 | 5 | 4 | 3 | 2 | 1 |
| ZONE REV | | DESCRIPTION | | DATE | | APPROVED | |
| 00 | | ECO1359JUS - ENGINEERING RELEASE | | 05/29/08 | | JTC | |

NOTES:

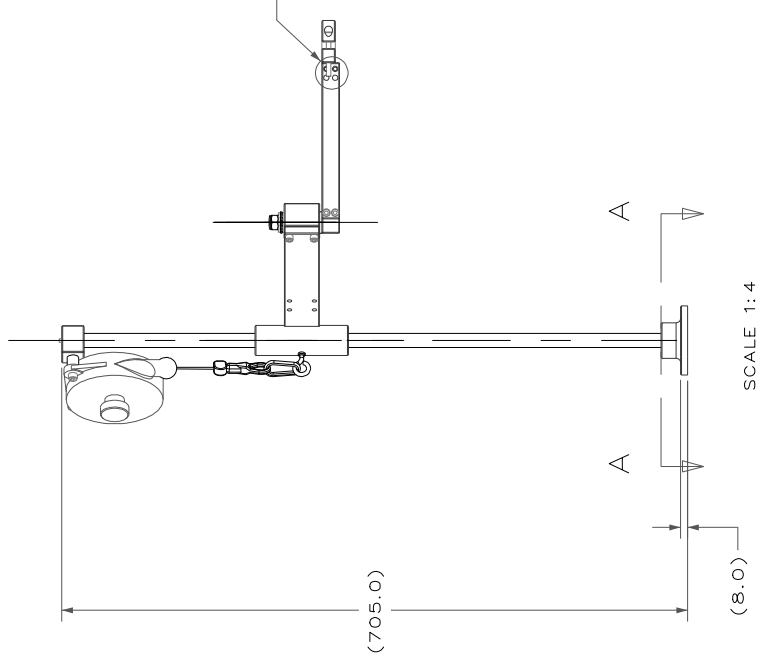
1. MAX TORQUE: 10Nm
2. MAX WORKING REACH: 381mm
3. TOOL DIAMETER: 39.9/25.4mm
4. MAX TOOL WEIGHT: 1.2kg



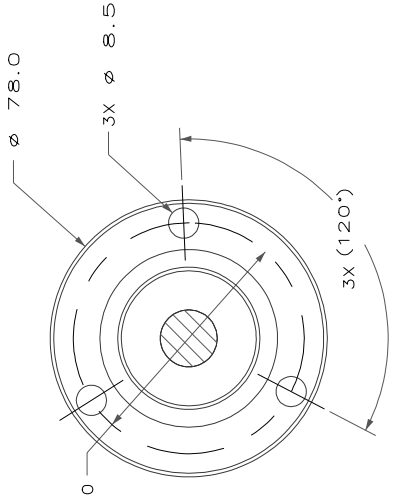
SCALE 1:4



DETAIL B
SCALE 2:1
TOOL HOLDER REMOVED
FOR CLARITY



SCALE 1:4



SECTION A-A
SCALE 1:1

| | | | | | | | | | |
|------------|--|---|--|---|--|------------------------|--|---------------------------|--|
| MATERIAL | | UNLESS OTHERWISE SPECIFIED, DIMENSIONS ARE IN MILLIMETERS | | C O P Y R I G H T C O M P A N Y | | S I - M E T R I C | | INGERSOLL-RAND COMPANY | |
| HEAT TREAT | | REMOVE BURRS AND SHARP CORNERS | | ALL RIGHTS RESERVED | | THIRD ANGLE PROJECTION | | AMTONGKON, NJ 08801 | |
| FINISH | | WORK SURFACES | | P R O D U C T I V I T Y S O L U T I O N S | | DRAWING TITLE | | TORQUE ARM ASSEMBLY, 10Nm | |
| | | V | | D W N B Y | | PART NO. | | 45547437 | |
| | | | | D R G B Y | | PROJECT | | QTA10 | |
| | | | | 02/28/08 | | LEADER | | APR/KUH | |
| | | | | 02/28/08 | | SCALE | | NTS | |
| | | | | | | SHEET | | 11 | |
| | | | | | | OF | | 1 | |