

RT Series Trolley

1 metric ton Capacity



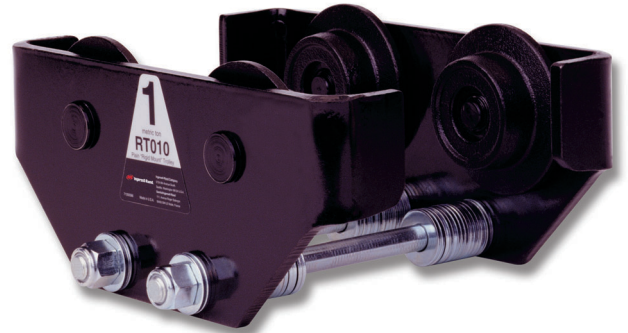
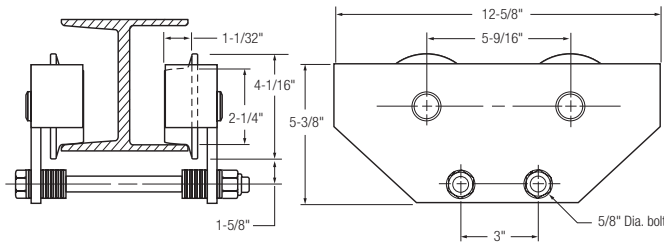
Plain and Rigid

Cousin to the PT Series trolley, the twin suspension shaft RT Series trolley offers a rigid connection for the MLK, MLKS and MLKR Series of air chain hoists. Like the PT Series, the RT Series uses universal tread wheels for use on flat or tapered flange beams.

RT010 Series Trolley Specifications

Trolley part no.	Capacity metric tons	Fits beam flange width (in.)	Min. turning radius (in.)
RT010	1/4 - 1	2 ²¹ / ₃₂ - 6	36

Note:
Wheels have universal tread for use on flat or tapered beams.



BC Series Beam Clamp

1 – 10 metric ton Capacity

Beam Clamp features:

Beam Clamps provide a temporary or permanent mount to a wide range of tapered or flat beams. These units have been designed and verified, by actual pull testing, to achieve minimum design factor of 5:1 for vertical lifting with powered or manual hoist meeting ASME B30.16. Quick and simple installation is achieved by hand without tools. Units accommodate hook-mounted hoist or load blocks with minimal loss of headroom. The clamp jaws are designed to reduce beam stress by applying the load inside of the flange edge.

- Quick installation by hand.
- Low headroom design adjust to fit a wide range of flat or tapered beams.
- Meets ASME B30.16 for use with powered or manual hoists.
- Each unit is serialized, supplied with a test certificate and manual.
- Metric rated for vertical lifting at 2200 lbs per ton.



BC Series Beam Clamp specifications and dimensions (in.)

Model no.	Capacity metric tons	Weight lbs	Beam width					
			A	B	C	D	E	F
BC-1	1	4	2 ¹⁵ / ₁₆ - 9 ¹ / ₁₆	3 ³ / ₁₆	8 ³ / ₄	4 - 6 ⁵ / ₁₆	1 ¹ / ₈	1 ¹³ / ₁₆
BC-2	2	5	2 ¹⁵ / ₁₆ - 9 ¹ / ₁₆	3 ⁵ / ₈	8 ³ / ₄	4 - 6 ⁵ / ₁₆	1 ¹ / ₈	7 ⁷ / ₈
BC-3	3	9	3 ⁵ / ₃₂ - 12 ⁵ / ₈	4 ⁵ / ₈	10 ³ / ₄	6 ⁵ / ₈ - 9 ¹ / ₂	2 ⁷ / ₁₆	1 ¹⁵ / ₁₆
BC-5	5	11	3 ⁹ / ₁₆ - 12 ⁵ / ₈	4 ¹³ / ₁₆	10 ³ / ₄	6 ⁵ / ₈ - 9 ¹ / ₂	2 ³ / ₈	1 ³ / ₁₆
BC-10	10	11	3 ⁹ / ₁₆ - 14 ³ / ₈	5 ¹⁵ / ₁₆	11 ¹ / ₆₄	6 ¹¹ / ₁₆ - 9 ¹ / ₄	1 ³¹ / ₃₂	1 ³⁷ / ₆₄

